



Department of Science & Technology  
Ministry of Science & Technology  
Government of India

**NMSHE** NATIONAL MISSION FOR  
SUSTAINING THE HIMALAYAN  
ECOSYSTEM



## STATE CLIMATE CHANGE CELL ARUNACHAL PRADESH

### NATIONAL MISSION FOR SUSTAINING THE HIMALAYAN ECOSYSTEM (NMSHE) Supported by DST, GOI.

**STATE CLIMATE CHANGE CELL (SCCC)- ARUNACHAL PRADESH.**

**OBJECTIVES AND MAJOR GOALS**

- Vulnerability and Risk Assessment of various Sectors of the State due to Climate Change
- Institutional capacity building to enhance the capacity to handle Climate Change programmes.
- Training programmes for government officials, including government leaders, and that the subjects to address the problems of Climate change.
- Involving masses to work for mitigating the impact of Climate change through awareness programme.

State Climate Change Cell was established on 31<sup>st</sup> October 2010 in the Department of Environment & Forest, Govt of Arunachal Pradesh under National Mission for Sustaining the Himalayan Ecosystem (NMSHE) which is one of the Special Missions under National Action Plan on Climate Change supported by Department of Science & Technology (DST) Govt of India.

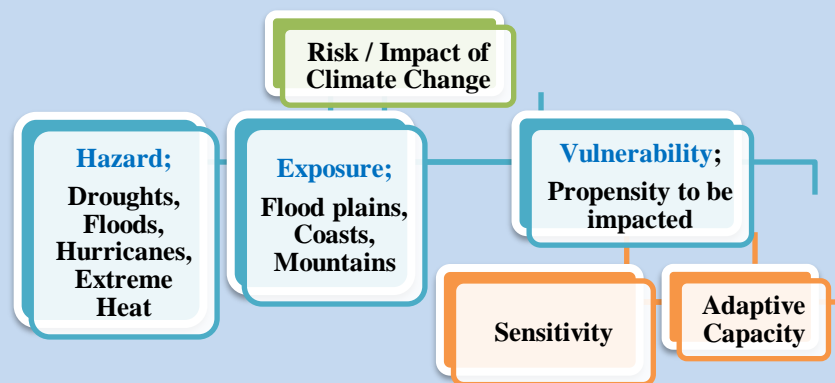
Locations of Automatic Weather Stations (AWS) installed in Arunachal Pradesh.





**Arunachal Pradesh Centre for Climate Change**

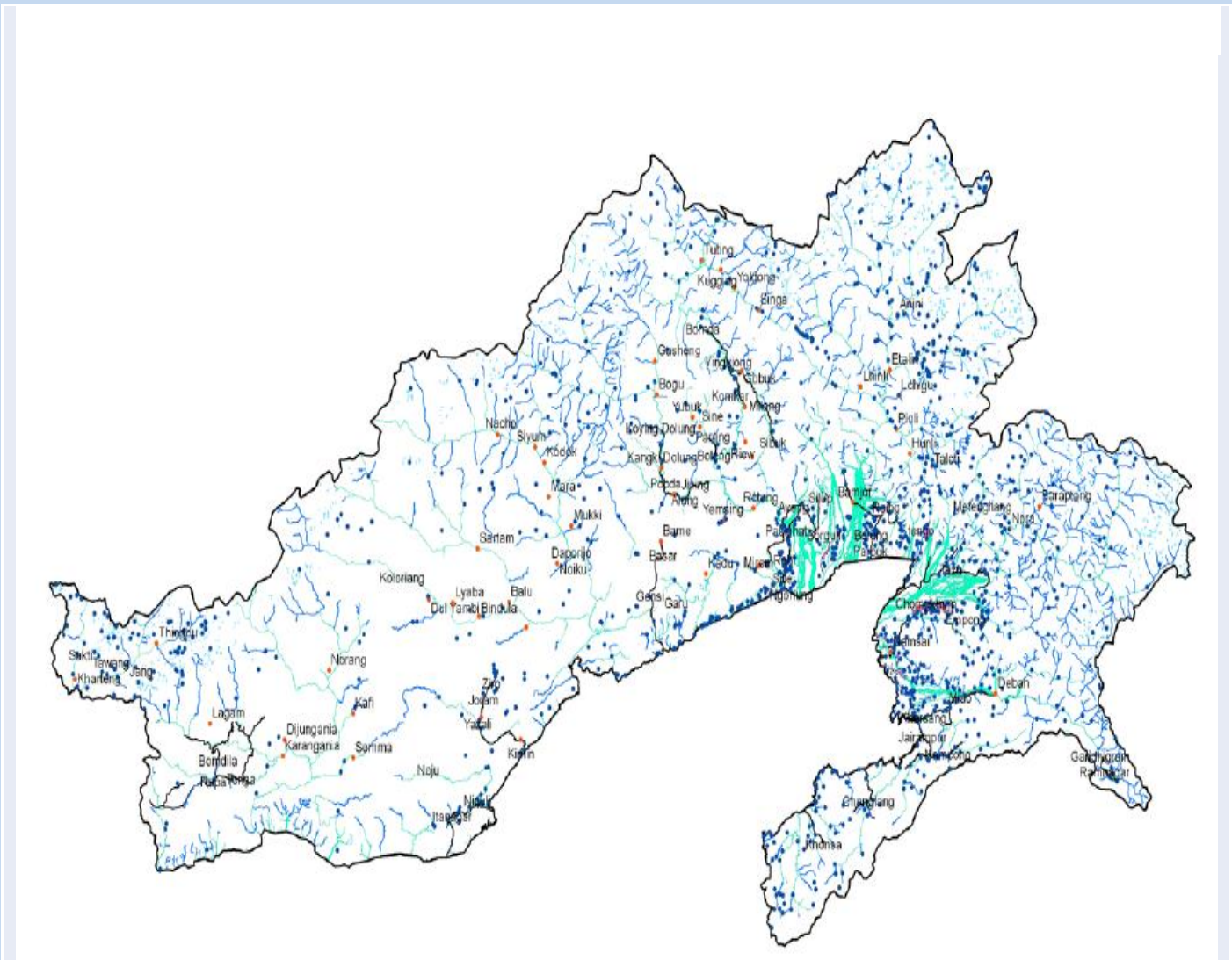
- Conduct modeling for climate change projections at district and block level
- Assess impact of climate change on agriculture, water resources, river flow, flooding, forests, health, etc.
- Develop AP specific and Sector specific Adaptation Strategy
- To develop mitigation strategy for Energy efficiency, Renewable energy
- Develop Adaptation and Mitigation projects and seek funding to Departments
- Capacity building among state Govt Depts



# FOREST COVER



Type of Cover	Forest cover (sq.km)
Very Dense Forest(VDF)	21,058
Moderate Dense Forest (MDF)	30,176
Open Forest(OF)	15,197
Scrub	797
<b>Total</b>	<b>67,771</b>
	<b>(79.33</b> <b>% of GA),SFR 2021</b>



As per -Space Application Centre (ISRO), Ahmedabad

**Fig. Wetland Mapping**

**Overview of Wetland of Arunachal Pradesh.**

**National wetland Inventory & Assessment(NWIA,2017)**

- *Total 1,534 wetlands have been mapped at 1:50,000 scale.*
- *1,119 wetlands (smaller than 2.25 ha) have also been identified.*
- *Total wetland area estimated is 15, 4609 ha that is around 1.91 per cent of the geographic area.*

**NESAC, Shillong (2016)**

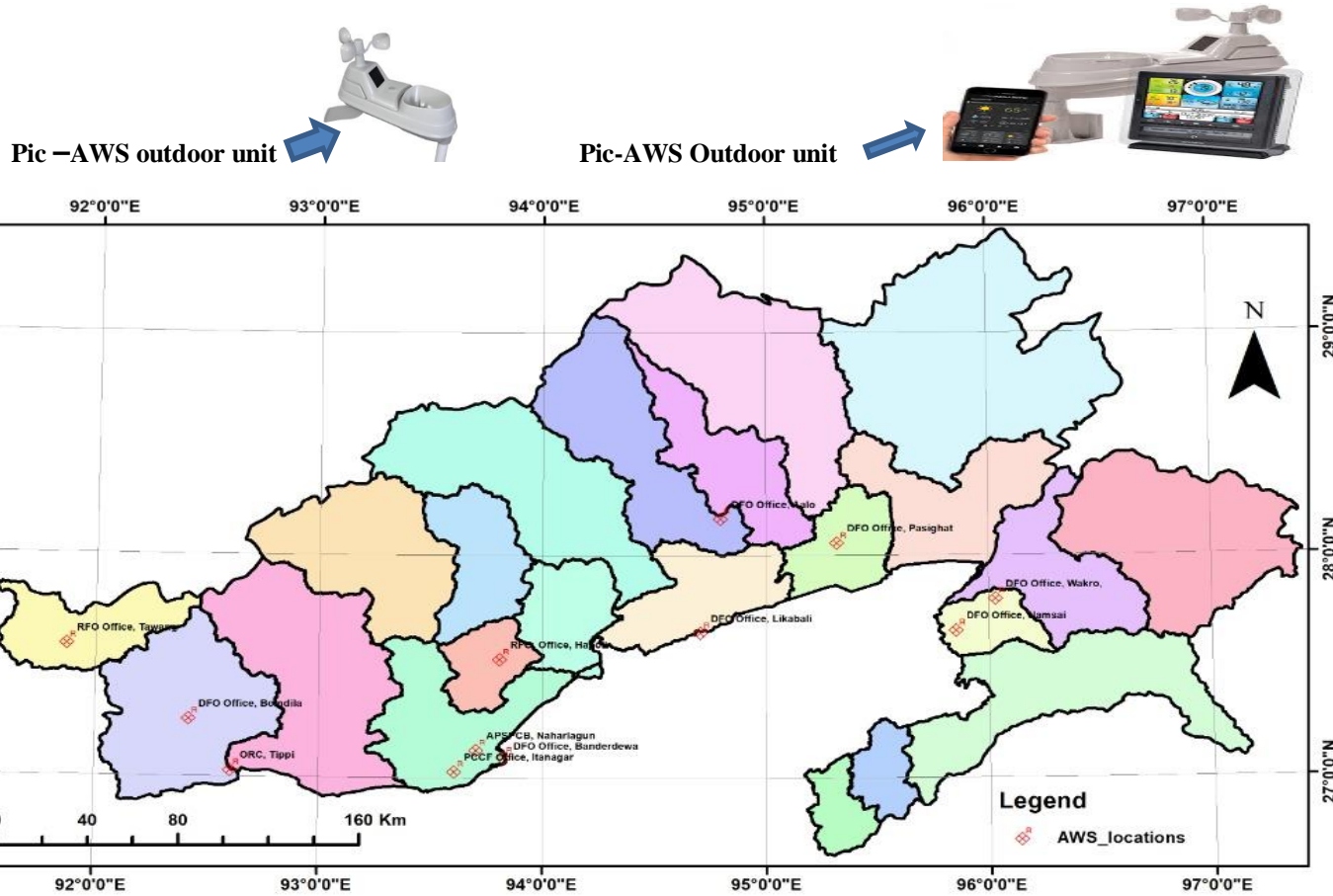
- *407 Wetlands above 5 Ha,*
- *217 – Wetland under Unprotected Forest above 5Ha*
- *190 – Wetlands under Protected Areas above 5 Ha.*



**Pic- During literacy programme on eve of World Environment Day , Haryali Sapta 2021 & Spring water rejuvenation activities of Papum-Poma areas under Sangdupota Papum-Pare, Distt.Arunachal Pradesh.**



**Pic- During training and operation of Automatic Weather Stations across Arunachal Pradesh in 2021 with officials from State Climate Change Cell and Technician.**



**Fig.Map , locations of Automatic Weather Stations across Arunachal Pradesh.**

